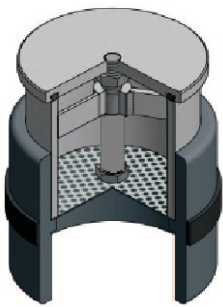
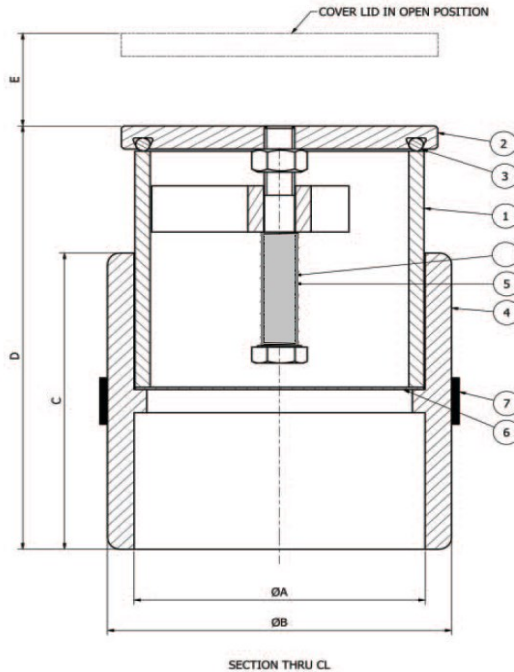


GROUNDWATER PRESSURE RELIEF VALVE - FLOOR MOUNT



**GWPRVF100
GWPRVF150**

DIMS (mm)	NB 100	NB 150
A	114.3	168.3
B	136	184
C	128	183
D	183	223
E	40	40



Australian Design - Manufacture

Your highly engineered Groundwater PRV is designed for minimal maintenance and for a 100% leak proof result.

Make a call to a Q water sales engineer for the **BEST** Hydrostatic solution available today!

ITEM	DESCRIPTION	MATERIAL
1	Body	316SS
2	Cover Lid	316SS
3	O-Ring Seal	Nitrile
4	PVC Adaptor	PVC-U
5	Guide Rod	316SS
6	Screen	316SS
7	Hydrotite Seal	Special

FEATURES:

- Floor mounted unit suitable for any tank where groundwater uplift may be a problem
- NB100 & NB150 dia sizes available
- Strong & durable 316SS material—corrosion resistant
- O-ring sealing with special retain feature
- Sealing surfaces machined to high tolerance
- PVC socket end for pvc pipe extension into gravel drain
- 316SS guide rod—corrosion resistant
- 316SS debris screen to prevent entry of foreign bodies
- All welds picked and passivated for maximum longevity
- Opening pressure is approx. 130mm differential head with an approx k factor of 9



Q water Pty Ltd
ABN 68 009 465 347

Head Office Ph: +61 (0) 7 3865 5555
Head Office Fax: +61 (0) 7 3865 5555

Mobile Ph **QLD**: +61 (0) 417 590 660
Mobile Ph **ALL**: +61 (0) 417 590 660

Email: sales@qwater.com.au
Web: www.qwater.com.au