

GROUNDWATER PRESSURE RELIEF VALVE - FLOOR MOUNT INSTALLATION GUIDELINES

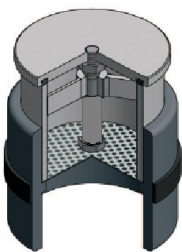
GWPRVF – Floor Mount:

- Select a PVC pipe length that will be sufficient to project beyond the concrete thickness.
- Use PVC pipe cleaner/primer and PVC glue to bond the GWPRV valve PVC socket onto the PVC pipe – “Tangit” brand or equivalent is suggested - follow all manufacturer’s instructions.
- Use Hydrotite DSS0220 as supplied around the GWPRV PVC socket OD to prevent water seepage pass the GWPRV valve - follow all manufacturer’s instructions for this product to produce best results.
- **Ensure** the GWPRV valve is positioned correctly and supported flat and level. The valve should protrude approximately 25mm above the finished concrete floor surface level in a normal installation.

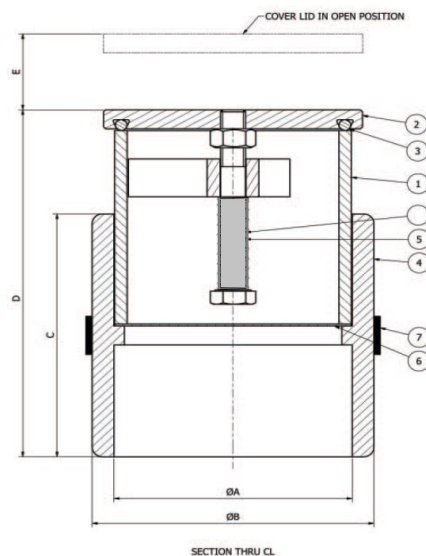
Alternatively, the valve can also be recessed and set flush and level with the tank floor.

Extreme care should be taken during the concrete pouring that the GWPRV valve has sufficient clearance to operate.

- Pour concrete ensuring the GWPRV valve is held correctly in position until concrete or grouting has set solid.



GWPRVF100
GWPRVF150



Australian Design - Manufacture



Q water Pty Ltd
ABN 68 009 465 347

Head Office Ph: +61 (0) 7 3865 5555
Head Office Fax: +61 (0) 7 3865 5555

Mobile Ph **QLD**: +61 (0) 417 590 660
Mobile Ph **ALL**: +61 (0) 417 590 660

Email: sales@qwater.com.au
Web: www.qwater.com.au